



## **Teryx TILT STEERING SYSTEM INSTALLATION INSTRUCTIONS**

***Teryx: Should be parked on a flat surface with parking brake set and front wheels in a straight forward position. To assure wheels are in straight forward position, measure from inside of wheel to frame on both sides. Move wheels as necessary to make measurements equal.***

### ***Cage and Hood Removal: ('08-'09 Models)***

- Remove Cage Assembly (It is necessary to remove the stock or aftermarket cage assembly in order to remove hood assembly) .
- Remove and retain seatbelt shoulder adjuster bolt from cage assembly. (2)
- Remove and retain cage front and rear mounting bolts. (4 per side)
- Remove Cage assembly.
- Remove Hood Assembly (It is necessary to remove hood assembly to gain access to stock steering components for replacement).
- Remove and retain hood mounting screws located near headlights underside of hood assembly. (4)
- Remove and retain hood mounting screws located in upper dash assembly. ( 6)
- Remove and retain hood mounting screws located on exterior hood. (2 per side)
- Remove stock steering wheel. (Note: Stock steering wheel will not work with the **ProPrecision Tilt Steering System.**)

### ***Dash Modification:***

- It is necessary to modify the dash assembly in order to accommodate the **ProPrecision Tilt Steering System.***
- Cut out (2) pieces of the enclosed template. (Note: cut on the inside of the line to achieve the proper dimension)
  - Mate (2) halves of template with masking tape. (Fig. 1)
  - Apply the template to the dash as shown using masking tape. (Fig. 2)
  - Cut dash assembly in straight line along and around steering column. (Note: this can be accomplished using a hacksaw blade, dremel tool, or similar tool)

### ***Stock Steering Column Assembly Removal:***

- Remove and retain steering shaft u-joint bolt. (1)
- Remove and retain stock steering column bolts. (2)

### ***Installing ProPrecision Tilt Steering System:***

- Slide the Tilt Steering Mounting Bracket thru hole in dash and into position. Install the (2) stock mounting bolts and tighten.
- Install edge trim around hole where dash was cut.
- Install Tilt Steering Mounting Plate to mounting bracket using (2) 5/16"-18 bolts provided.
- Slide the Tilt Steering Mechanism/Shaft Assembly into mount and onto stock steering shaft. **Note: Be sure to align the woodruff keyway on steering column output shaft to a 12 o'clock position with wheels in straight forward position. All ProPrecision Billet Steering Hubs are designed with keyways in that position to facilitate the steering wheel position.**
- Secure Tilt Steering Mechanism/Shaft Assembly with (4) socket head bolts provided and tighten.
- Install stock steering shaft u-joint bolt and tighten. (1)
- Install lower ABS cover using (2) screws.
- Install upper ABS cover using (3) screws.
- Install rubber dust cover.
- Install **ProPrecision Steering Hub Assembly** (included) or other after-market hub assembly. **Note: Manufacturer recommends the application of an anti-seizing compound on steering column output shaft prior to assembly.**
- Install woodruff key into keyway. (1)
- Install Billet Hub.
- Secure Billet Hub with washer and locknut provided. (1)
- Install aftermarket steering wheel using "PRO" Cap.

### ***Re-Install Hood and Cage Assembly***

- Re-install hood assembly.
- Re-install all stock fasteners.
- Re-install cage assembly.
- Re-install (8) cage mounting bolts.
- Re-install (2) seatbelt shoulder adjusters.

***P.O. Box 651, Banning, Ca 92220  
951-640-6682***

# Teryx Dash Template

\*\* Cut along inside of line to insure proper sizing for dash modification.

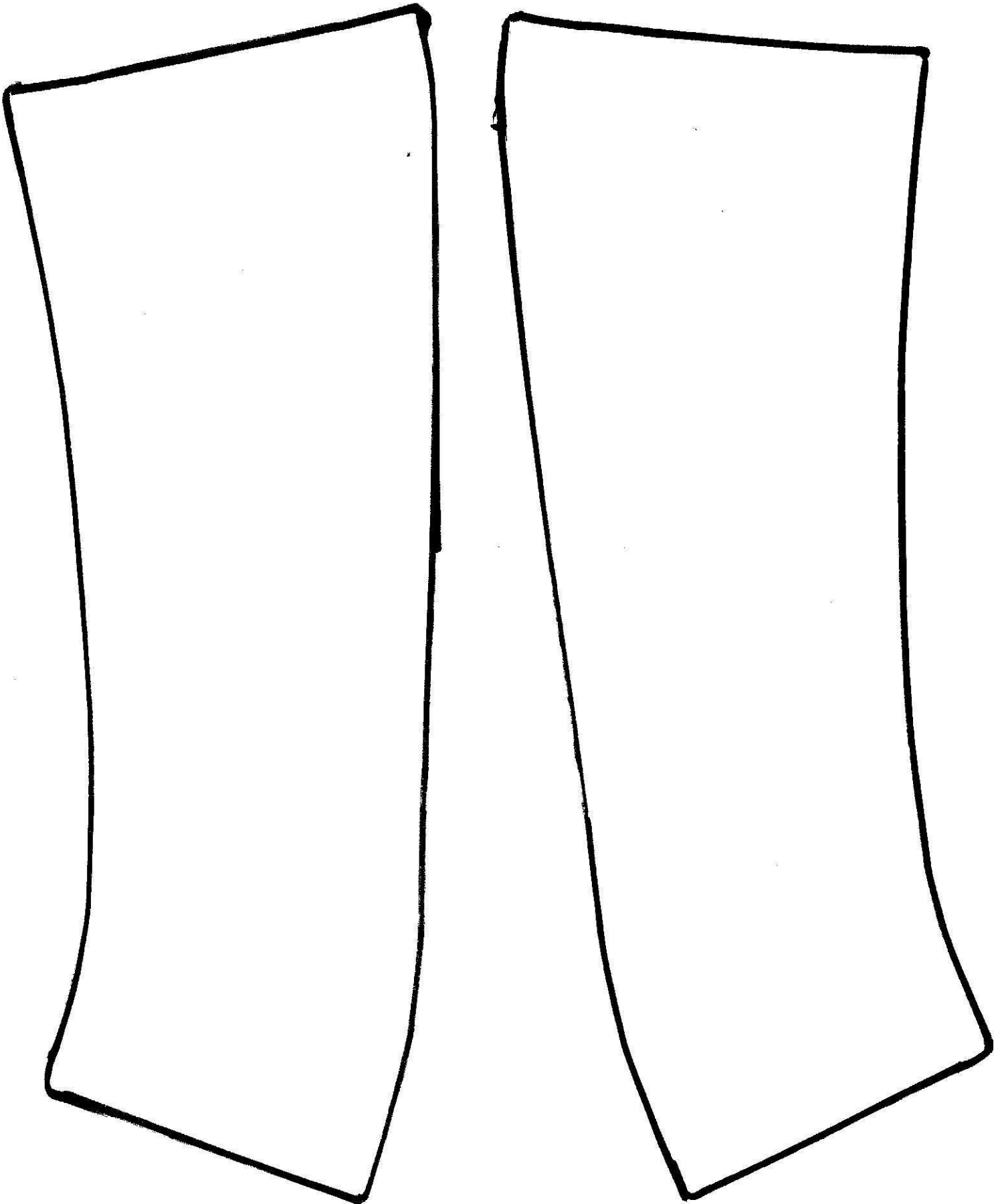




Fig. 1

Place (2) halves together as shown.

Fig. 2



Place template against dash and tape in place as shown.